

# Dictation Warm-ups

## AP Music Theory

*FOCUS: rhythm in compound meter*

1a 1b

1c 1d

*FOCUS: pitch spellings in the minor mode (scale degrees 6 & 7)*

2a ( ♮   ♭ )

2b ( ♮ ♭ )

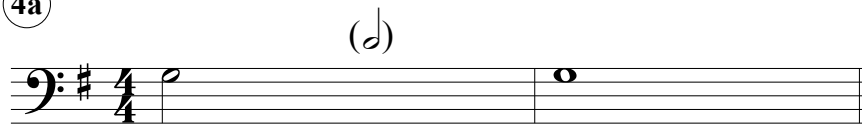
3a ( ♮   ♭ )

3b ( ♮ ♭ )

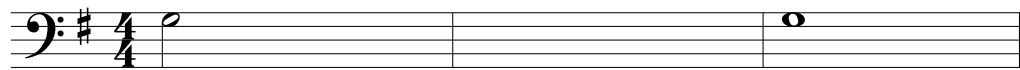
*FOCUS: common bass lines*

[Use half notes to complete each bass line.]

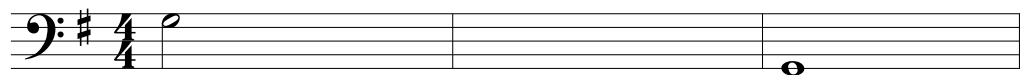
4a



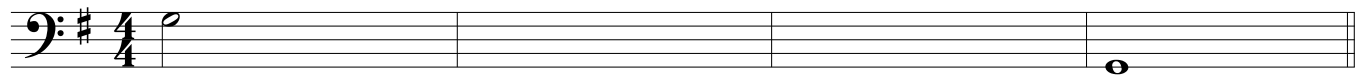
4b



4c



4d



**ANSWER KEY**

# Dictation Warm-ups

## AP Music Theory

*FOCUS: rhythm in compound meter*

1a 1b

1c 1d

*FOCUS: pitch spellings in the minor mode (scale degrees 6 & 7)*

\* = note student must complete

2a

2b

3a

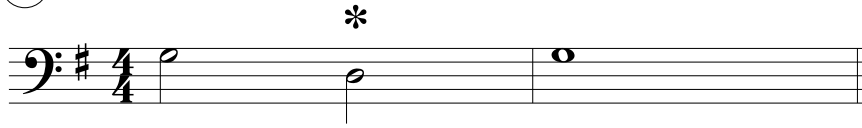
3b

*FOCUS: common bass lines*

[Use half notes to complete each bass line.]

\* = note student must complete

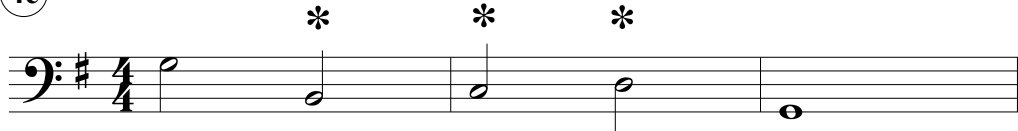
4a



4b



4c



4d

