

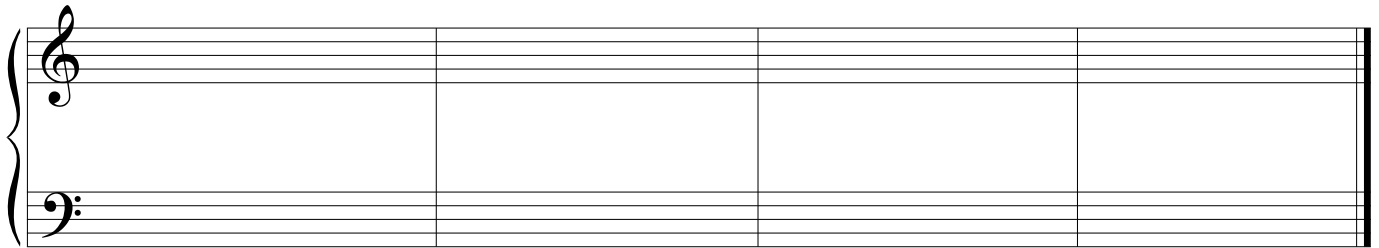
Composition: Chorale Phrase

INSTRUCTIONS:

Compose a chorale phrase in SATB format. Follow the 18th-century conventions we have been studying.

- * Choose and notate your meter (2/4, 3/4, or 4/4) and key.
- * Keep rhythm simple: Use *mostly* quarter notes, but for contrast you may use note values ranging from eighth notes to whole notes.
- * The final cadence note should occur on a strong beat.
- * Must use a cadence type that we have studied (authentic, plagal, or half).
- * Use only primary triads (tonic, subdominant, and dominant) in root position.
- * Follow 18th-century conventions for chord spacing, doubling, voice-leading, and chord progression.
- * Include initial markings for tempo and dynamics.

PROVIDE COMPLETE ANALYSIS THAT INDICATES THE KEY, CHORDS (Roman numerals), AND CADENCE USED.



Optional: The staves below are provided if you wish to re-copy for neatness or produce a final version.

